



Tessera

www.japanrailjourney.com

**14 Days – Monorail, Shinkansen,
DMV and sleeper train**

Tokyo

- **Capital** of Japan since 1869.
- Tokyo is known as the most populous city on Earth. The metropolitan area of Tokyo is more than 37 million inhabitants, and it is the biggest in the world.
- Not only political, but also economical and cultural capital of Japan, where you can encounter state-of-the-art technologies and traditional temples and shrines.
- Places to visit: Asakusa Sensoji temple, Tsukiji fish market, Imperial palace, and Harajuku Takeshita street.



A close-up photograph of a traditional Japanese dish served in a wooden bowl. The dish consists of a bed of white rice topped with a generous amount of small, white, translucent whitebait (shirasu). Interspersed among the whitebait are several large, cooked shrimp with a pinkish-orange hue. A small, bright yellow mound of pickled ginger sits near the top center, garnished with a fresh green leaf of shiso. The bowl is set against a dark background, and the lighting highlights the textures of the ingredients.

Enoshima

- **A tied island**, connected with Honshu by tombolo, located at Sagami bay in Kanagawa prefecture.
- Popular destination in Kanto region, many people enjoy fishing, diving and other marine sports at Enoshima. There is a first outdoor escalator in Japan built in 1959 and Enoshima shrine as the tourist attractions. Also, not so far from Kamakura.
- Island inhabitants are around 350 and the local specialties are whitebait and horned turban. Especially raw whitebait on rice is the Enoshima's most popular dish, very worth to try.

Kamakura

- **Tsurugaoka Hachimangu shrine**
 - One of the two most popular tourist attractions in Kamakura. Tsurugaoka hachimangu was removed to this place when the warlord and first Japanese shogun, Yoritomo Minamoto built the shogunate in Kamakura. Hachimangu is a Shinto shrine dedicated to Hachiman, which is a god of war.
- **Kotokuin temple**
 - The another most popular tourist attraction in Kamakura, Kanagawa prefecture. Kotokuin is famous for its big Buddha statue located outside.



A wide-angle photograph of the interior of the Railway Museum. The space is vast, with a high, arched ceiling supported by a complex steel truss system. The floor is filled with various railway exhibits, including steam locomotives, diesel engines, and passenger trains. A large circular platform in the center features a red train. In the foreground, a white high-speed train is visible. A balcony with a glass railing runs along the upper level, where visitors can view the exhibits from above. The lighting is bright, highlighting the details of the trains and the architectural structure.

The Railway museum

- Opened in 2007.
- Founded by JR East.
- Total 41 trains are exhibited.
- HO scale railway modelling layout can be enjoyed.
- 2 restaurants and 1 café.
- Souvenir shop

Kanazawa

- A castle city during Edo era, when Tokugawa shogunate ruled Japan.
- Kanazawa is the second largest city on Sea of Japan side of Japan, after Niigata. Niigata is an important port, but Kanazawa attracts much more tourists. The main tourist attraction is Kenrokuen garden, which is considered as Three major gardens in Japan.
- The number of foreign tourists grown rapidly thanks to opening of Hokuriku Shinkansen in March 2015, but the famous Tsuzumi gate was already introduced at East entrance of Kanazawa station in 2005.
- Then, East entrance has changed its name to Kenrokuen entrance in 2015.





Kyoto

Attractions related to railway.

- Kyoto railway museum
- Sagano Romantic train



Kyoto

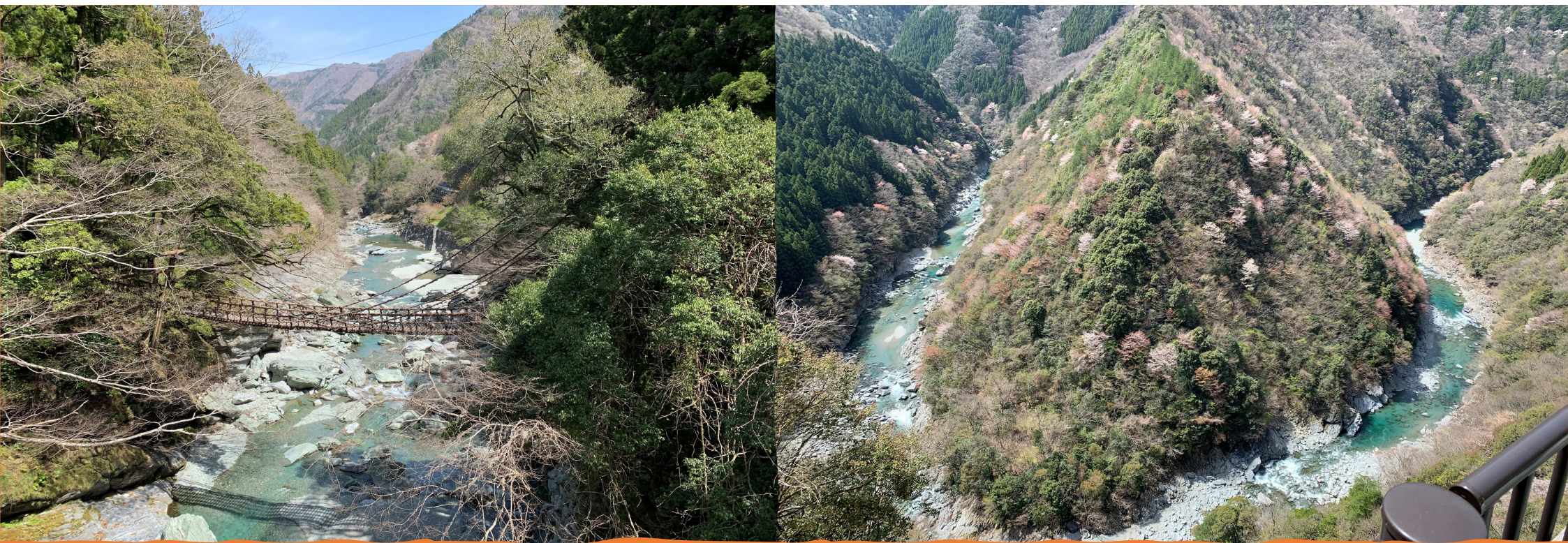
Former capital of Japan.

Places to see = Kinkakuji golden pavilion, Ryoanji temple, Kiyomizu temple, and Arashiyama district



Takamatsu

- Prefectural capital of Kagawa prefecture on Shikoku island.
- Takamatsu is not an administrative city. There are popular tourist attractions such as Ritsurin garden.



Iya valley region

- A scenic area known for its dramatic mountain valleys, thatched roof farmhouses and historic simple suspension pedestrian bridge, Iyanokazura bridge.

Udatsu townscape

Udatsu townscape is located at Wakimachi district of Mima city in western Tokushima.

A former trading distribution center of Japanese indigo.



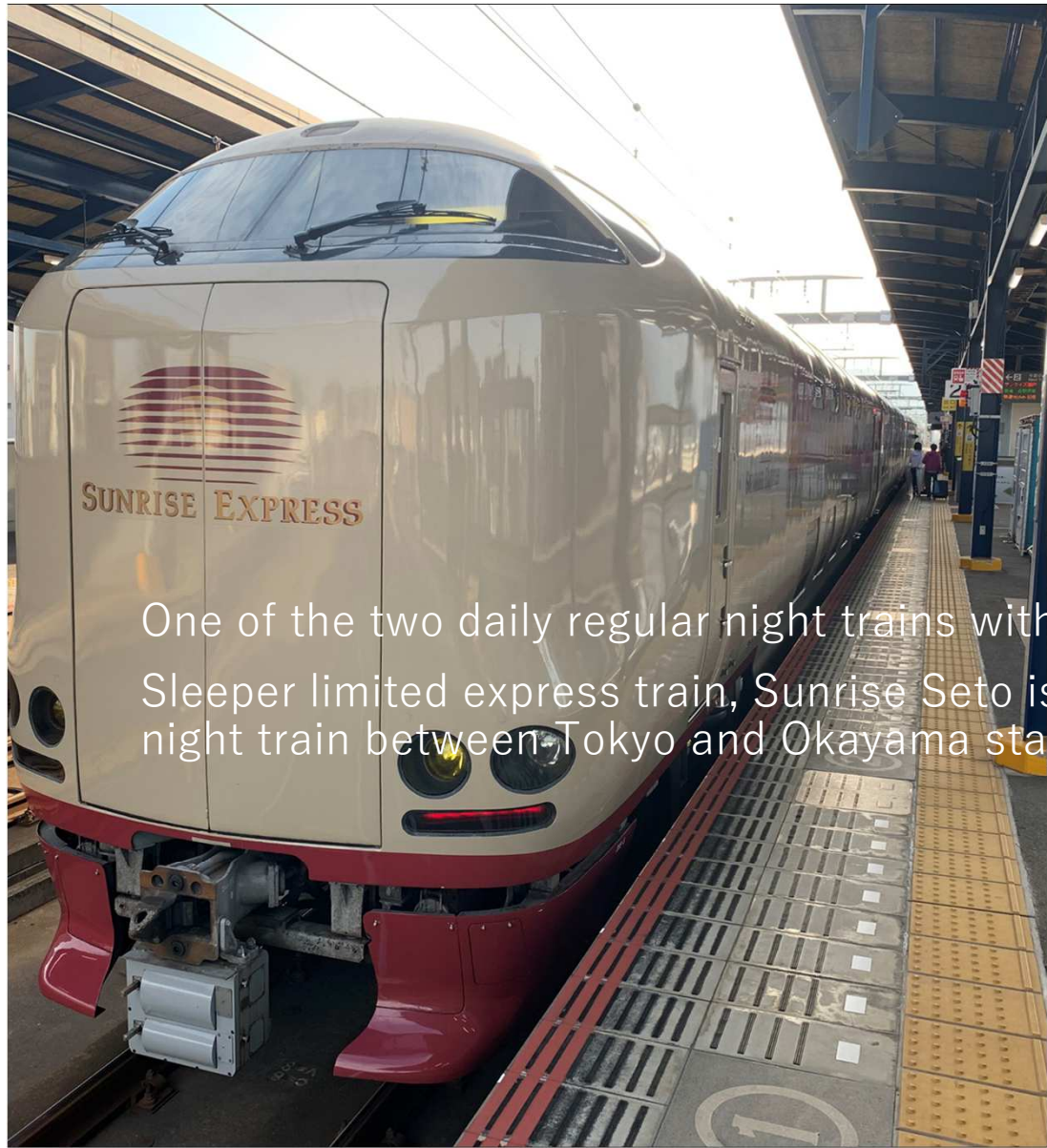


Tokushima A view from Mt.Bizan



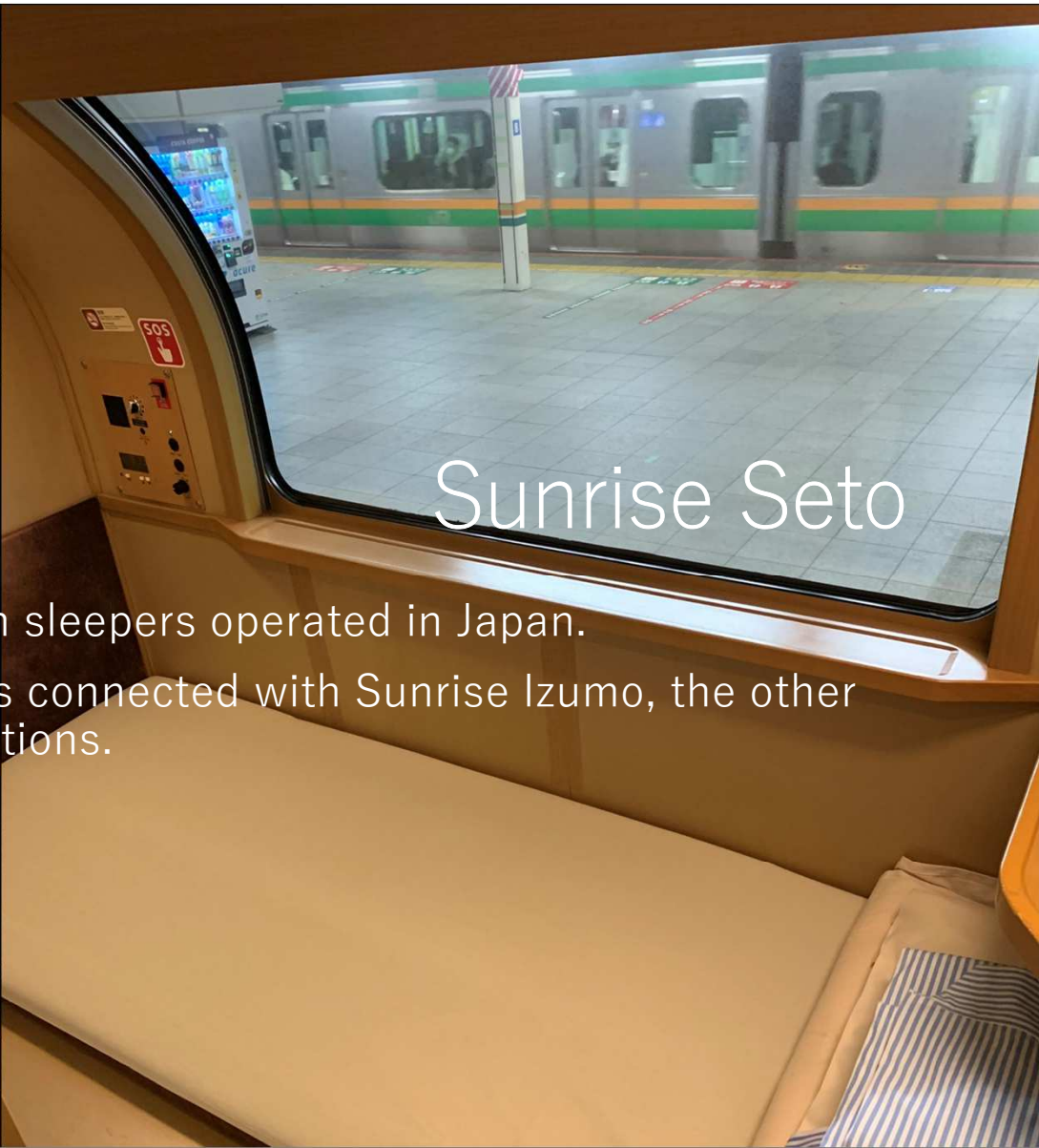
Dual-mode Vehicle(DMV)

- World's first DMV on daily operation by Asa Coast Railway Company.



One of the two daily regular night trains with sleepers operated in Japan.

Sleeper limited express train, Sunrise Seto is connected with Sunrise Izumo, the other night train between Tokyo and Okayama stations.



Sunrise Seto

Itinerary

- Day 1 Sunday
 - Arrival at Narita/Haneda airport
 - Meet and greet with our tour escort at arrival hall
 - Transfer to hotel by private car
 - Overnight in Tokyo
- Day 2 Monday
 - Full day sightseeing in Tokyo by public transport and on foot
 - Visit to Imperial palace, **Asakusa Sensoji temple**, Tsukiji fish market, Harajuku Takeshita street and Meiji Jingu shrine
 - Overnight in Tokyo
- Day 3 Tuesday
 - Full day excursion to Enoshima & Kamakura by public transport and on foot
 - JR train to Ofuna station
 - Shonan monorail train from Ofuna to Shonan-Enoshima

DAY 3 - 4

Sightseeing in Enoshima
Enoden train from Enoshima to Hase
Sightseeing in Kamakura
Visit to **Kotokuin temple(Big buddha)**.
Enoden train from Hase to Kamakura
Visit to **Tsurugaoka Hachiman-gu shrine**
JR train from Kamakura to station in Tokyo
Overnight in Tokyo

Day 4	Wednesday	Half day excursion to Saitama by public transport Visit the Railway museum
	Afternoon	Depart Omiya by Hokuriku Shinkansen
	Evening	Arrival at Kanazawa station Overnight in Kanazawa

DAY 5 - 6

Day 5	Thursday	Full day sightseeing in Kanazawa by private car Visit to Kenrokuen garden , Higashichaya district, Kanazawa castle garden, Omi market Overnight in Kanazawa
Day 6	Friday	Depart Kanazawa station by limited express Thunderbird Arrival at Kyoto station Half day sightseeing in Kyoto by public transport Visit to Kyoto railway museum Enjoy Sagano Romantic train Overnight in Kyoto

DAY 7 - 9

Day 7	Saturday	Full day sightseeing in Kyoto Visit to Kinkakuji temple (Golden pavilion), Kiyomizu temple, Arashiyama district and Ryoanji temple by private car Overnight in Kyoto
Day 8	Sunday	Free for leisure Overnight in Kyoto
Day 9	Monday	Depart Kyoto station by Tokaido/Sanyo Shinkansen Change train at Okayama station Crossing Seto Great bridge Arrival at Takamatsu station in Kagawa prefecture, Shikoku Half day sightseeing in Takamatsu by private car Visit to Ritsurin garden and Shikoku village museum Overnight in Takamatsu

DAY 10 - 11

Day 10	Tuesday	Depart Takamatsu station by limited express Shimanto Arrival at Awa-Ikeda station Sightseeing in Iya valley region by private car Visit to Iyanokazura bridge
	Afternoon	Sightseeing of Udatsu townscape in Waki-machi district, Mima city Depart Anabuki station by local train on JR Tokushima line Arrival at Tokushima station
	Evening	Visit to observatory of Mt.Bizan by aerial tramway and on foot Overnight in Tokushima
Day 11	Wednesday	Depart Tokushima station by local train on JR Mugi line Arrival at Awa-Kainan station and change to DMV DMV return journey between Awa-Kainan and Road station Shishikui onsen

DAY 11 - 14

Depart Awa-Kainan station by local train on JR Mugi line
Change to Kotoku line train at Tokushima station

Evening

Arrival at Takamatsu station and change to **Sleeper limited express train Seto**
Overnight on board

Day 12 Thursday

Arrival at Tokyo station
Free time on leisure
Overnight in Tokyo

Day 13 Friday

Free time on leisure
Overnight in Tokyo

Day 14 Saturday

Transfer to Haneda/Narita airport by train
Check in at airport – End of the tour

Tour includes

- Tour escort: English speaking tour escort will meet you at airport on day 1 and accompany you till day 14, terminating at the airport.
- Private car: Private car will be arranged on day 1 from airport to hotel in Tokyo, day 5 in Kanazawa, day 7 in Kyoto, day 9 in Takamatsu and day 10 in Iya. Vehicle size will be minivan for 2-4 persons.
- Accommodation: 3/4/5 stars hotels according to your wish/budget. Hotels in Kanazawa, Takamatsu and Tokushima will be 3/4 stars. Twin/Double room basis. Single room can be booked with extra supplement.
- Train tickets: 14 days Japan Rail Pass (Ordinary-2nd class or Green-1st class), Sleeper limited express Sunrise Seto (Standard: 2nd class sleeper – you can upgrade to 1st class sleeper), return DMV ride and Suica(contactless smart card value of JPY 5000).
- **Admission: Includes admissions for tourist attractions mentioned in the itinerary. A toll for Iyanokazura bridge and return aerial tramway for Mt.Bizan. If you want to enter other tourist attractions not mentioned in the itinerary, please advise us before your departure.**
- Meal: Buffet breakfast from day 2 to day 14. You will have opportunities to have hot meals for lunch and dinner on your expense, advised by tour escort on the spot.
- **Others:**
- **Your large suitcase will be sent to Kyoto on morning of day 4(you can pick up the suitcase on day 6. Then, the large suitcase to Tokyo on morning of day 9 to Tokyo(you can pick up the suitcase on day 12). Therefore, please carry backpack or carry on(or middle size) suitcase between day 4-6 and day 9-11.**

Still interesting?

Please contact

Tessera

and

get the **best rate!**